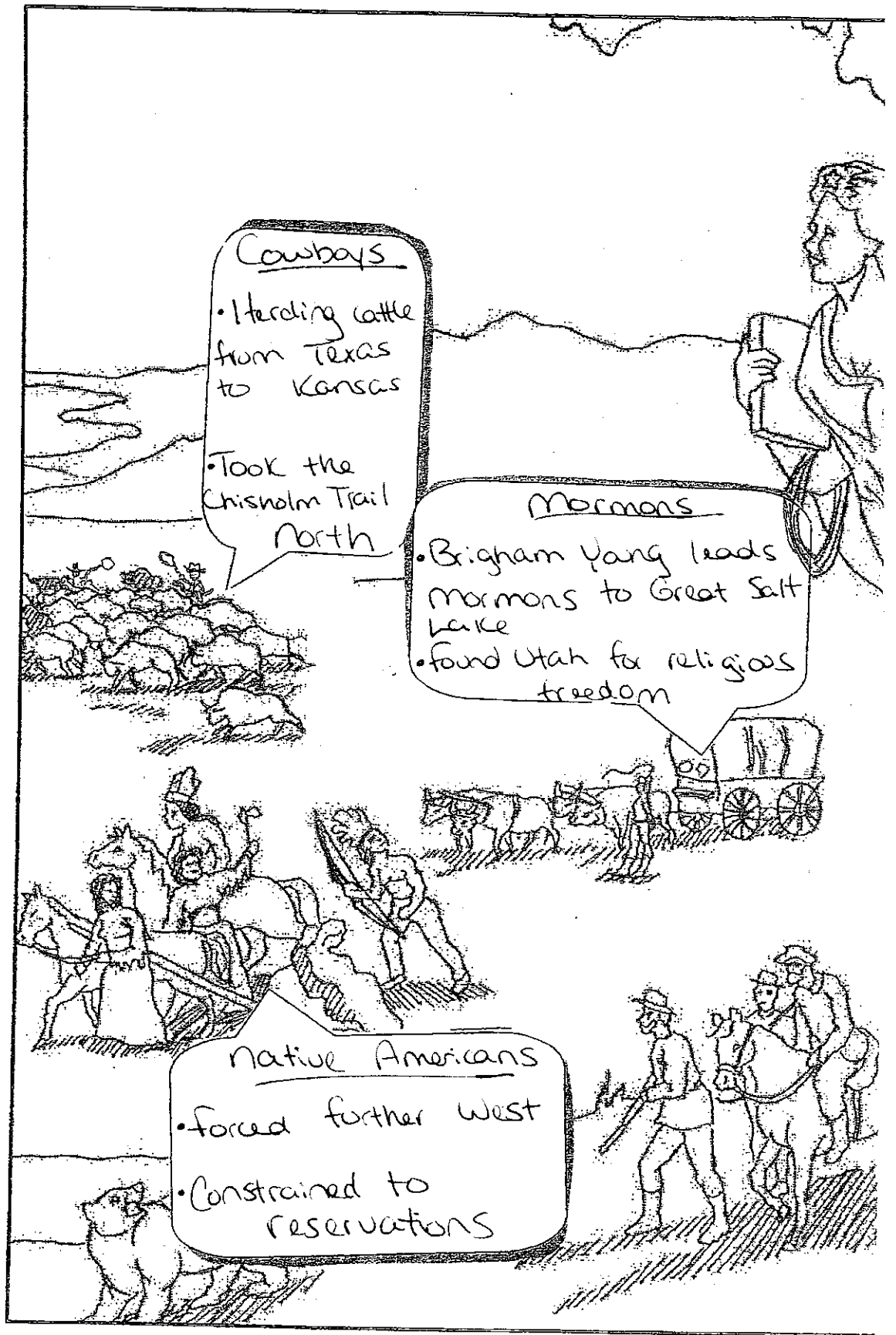
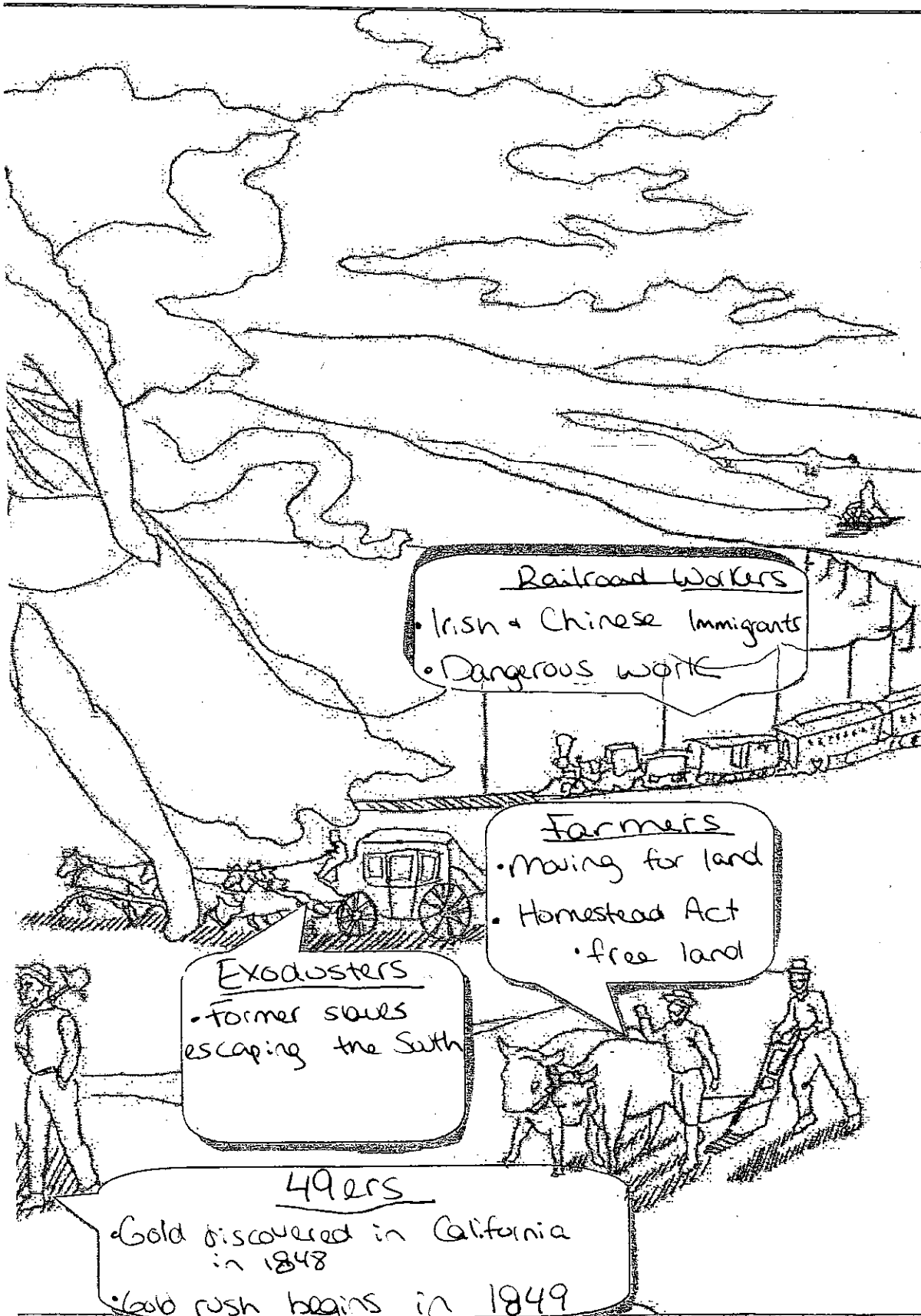


Key



Key



Railroad Workers
• Irish + Chinese Immigrants
• Dangerous work

Farmers
• Moving for land
• Homestead Act
• free land

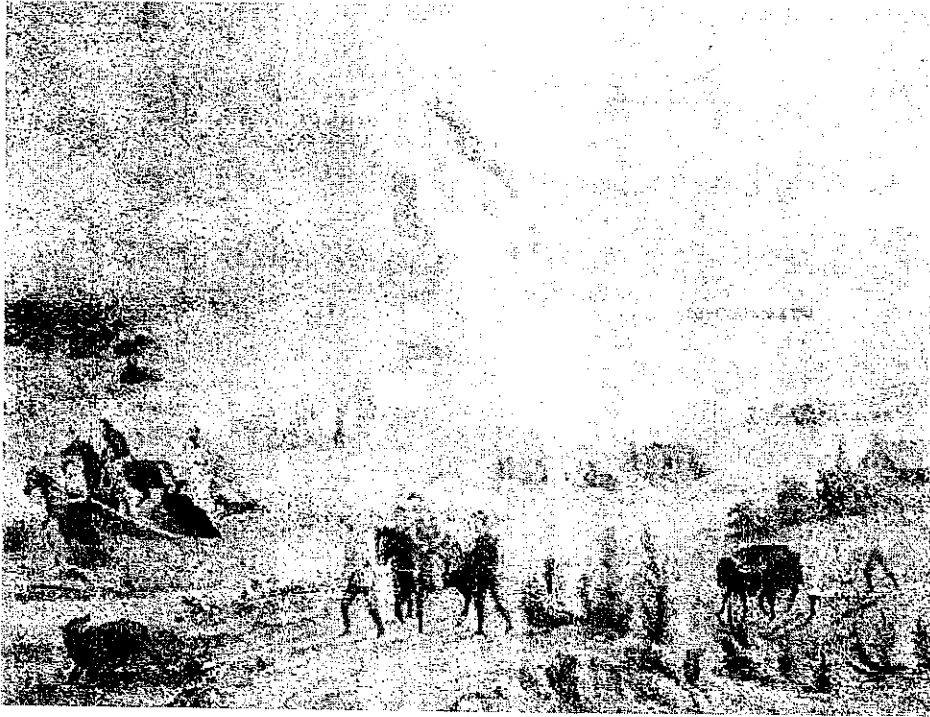
Exodusters
• former slaves
escaping the South

49ers
• Gold discovered in California
in 1848
• Gold rush begins in 1849

Name Key Period _____ Date _____

“American Progress” by John Gast

Use the picture below of “American Progress” by John Gast (1872) to answer the following questions with a partner. Answer using complete sentences.



1. In the picture there are people using several different types of transportation. Where are they going? Why are they heading there? List the types of transportation they used.

The people are moving west. They are moving for land and opportunity. We see trains, wagons, boats, horses and walkers.

2. Why do you think that the area to the East is a very bright color and the area heading West is a very dark color?

The East has the innovations and progress which make them in the light. The West is unsettled so it is in the dark.

3. Why are there Native Americans in the picture and what does it appear that they are doing? Identify other things that are acting similar to the Native Americans.

The Native Americans are running away. The buffalo also appear to be running away.

4. What is the purpose of having the “angel” in the picture? What does it appear that she is doing? Why is she doing what she is doing?

She represents Providence and Manifest Destiny. She is bringing progress and leading the way because it is “God’s plan” for the Americans.